

## *We are 9-centered beings*



*Nine Temples, Babaji ashram, Haidakhan, India*

### **Introduction**

*“All beings are multi-dimensional, including humans. Our problem is that we have forgotten our multi-dimensional nature and have been disconnected from much of ourselves.” <http://in5d.com/4-types-of-multidimensional-beings/>*

Many channelers and spiritual teachers talk about the ‘ascension’, ‘multi-dimensional beings’ and humanity moving into a ‘higher dimension’. What does all this mean? How many dimensions are there, what dimension do we live in now, and what dimension are we ascending into?

In 1990, I worked with a healer and channeler named Ruth White, who had become well-known in the 1960s as the channel of ‘Gildas’, a disincarnate entity who spoke through her of the changes that are coming in the world.

*“The slowly increasing energies needed for a birthing of the new consciousness and the earthing of a new planet began to flow to us in the late sixties. People that are informed won't have the shock others may experience.” Gildas Communicates [www.spiritwritings.com/booksnewearthreviews.html](http://www.spiritwritings.com/booksnewearthreviews.html)*

In their published work ‘Gildas Communicates’, Gildas uses the term ‘*fourth dimension*’ and refers to the ‘*coming of the golden age*.’ However, when I met her in 1990, Ruth was clear that there was going to be a ‘quantum shift’ into the 5<sup>th</sup> dimension. In *The Keys of Enoch*, Dr. J.J. Hurtak also talks about a quantum shift to the fifth dimension:

*“Why were the Keys given at this time? Enoch and Metatron have manifested this Revelation so as to prepare mankind for the quantum changes affecting every level of intelligence upon this planet. We now have the opportunity to collectively move into another system of creation.” Keys of Enoch*

*““The physical form of life passed into greater 'light' and the matter-energy bodies of the faithful were advanced into fifth-dimensional bodies of Light, into the greater universe.” Keys of Enoch*

## Barbara Hand Clow



Barbara Hand Clow is an Astrologer, author, and expert in the Mayan Calendar. Her books include *"The Alchemy of Nine Dimensions"* and *"The Pleiadian Agenda: A New Cosmology for the Age of Light"*.

Barbara writes about the *nine dimensions of human consciousness*, which she first learned about during her channeling of Satya, a Pleiadian goddess. The Pleiadians are a group of 5<sup>th</sup> dimensional beings who believe that the end of the Mayan Calendar will signal a critical leap in human evolution; the Pleiadians are 5<sup>th</sup> dimensional beings who are here to help us navigate this leap in consciousness.

*"We are integrating the evolutionary critical leap of our species triggered by the completion of the Mayan Calendar in 2011/2012, as we awaken in the Universe."*

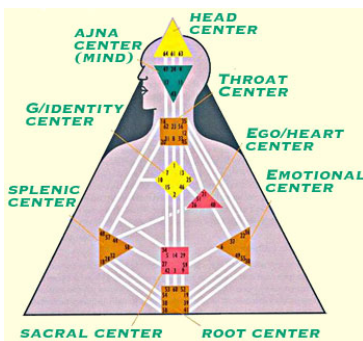
*"Our solar system is moving into the Photon Band, a realm of pure Pleiadian light. Many of you may feel over-energized, ungrounded, and disoriented now because this cosmic convergence has never happened before. We are in the midst of an evolutionary critical leap that inspires us to heal our bodies, transmute our emotional blocks, clarify our minds, and commune with our souls."*

<http://www.handclow2012.com/index.htm>

Barbara Hand Clow was taught that the *"Earth is a realm that holds 9 dimensions of consciousness that all humans can access."* Before the cataclysm (the deluge that ended the last ice-age) this was a natural state for humans. Now is the time for us to begin to consciously access these dimensions and become 9 dimensional humans once again.

According to Hand Clow, the 9 dimensions exist along the axis of the World Tree, which is grounded in the center of the Earth. The World Tree is the cosmic creative force that creates Time and all the dimensional realms. In this model, the center of the Earth is the 1st dimension and the center of the galaxy is the 9th.

<http://ritualgoddess.com/the-9-dimensions-of-the-world-tree/>



### The Human Design System

Human Design entered the world in 1987 when a teacher known as Ra Uru Hu received a revelation from *'The Voice'*. It gives us a completely new understanding of the human life process, and shows us that we all have a unique design and a specific purpose to fulfill while on Earth.

*"Human Design uses your birth data to calculate your Human Design Chart, or BodyGraph. The BodyGraph is a graphic illustration of the energetic flow within your system, a blueprint for how you operate and interact with the world."*

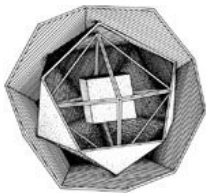
According to the Human Design System, humanity is in the process of transition into a new being, the RAVE, which is a fully evolved **9-centered being**. At present we are a transitional being, moving from 7 to 9 centers, a process that started in 1781. Central to that transition is the mutation of the solar plexus, the emotional center which is the source of much of the confusion and conflict that has defined mankind's experience. The mutation involves an awakening of the Solar Plexus as an awareness center. The evolutionary process ends in 2027. After that date, all humans born on earth will be fully 9-dimensional beings, or Raves.

When I heard Barbara Hand Clow talk about the 9 dimensions, I was immediately struck by the correspondences with the 9 centers of the human design system and the understanding that we are becoming 9-centered beings, able to interact with beings in all 9 dimensions and access the information and knowledge that is available in all 9 dimensions.

### **1<sup>st</sup> dimension – The Root Center**

*"Where were you when I laid the earth's foundation? Tell me, if you understand." Job 38:4*

Barbara talks about the first dimension as the 'hexagonal crystal-iron core of the earth'.



The idea of a geometric arrangement of matter at the atomic level is described in the work of *Dr. Robert J. Moon*, an American physicist, chemist and engineer who pioneered work on the fundamental structure of the atomic nucleus based on platonic solids. In his theory, protons are not clustered in the center of the atom, but are considered to be located at the vertices of a nested structure of Platonic solids, giving a geometric basis to physical matter, and identifying the most stable and abundant elements as oxygen, silicon and iron.

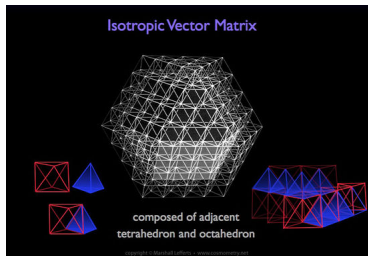
The first solid in the nested sequence is the cube which has 8 vertices, giving us oxygen - one of the most stable and abundant elements - with 8 protons. The second solid is the octahedron, with 6 vertices. A cube inside an octahedron has 14 vertices which gives us silicon, another very common and stable element with 14 protons. The third solid in the sequence is the icosahedron, which has 12 vertices. If we add these three solids together, we get IRON with a total of 26 vertices. Iron is not only one of the most stable and abundant elements, but is the only magnetic metal, is essential to human life as hemoglobin, and makes up the core of the earth.

*Sacred Solids in the Atomic Nucleus - "Our picture of the nucleus is so far different from the accepted picture as to make any comparison impossible. The trained specialist recognizes immediately that if we are right, the whole edifice of 20th Century atomic physics must be rethought." Laurence Hetch <http://aetherforce.com/sacred-solids-in-the-atomic-nucleus/>*

*Professor Lars Stixrude (Department of Earth Sciences, University College London), also believes that the core of the earth is a single hexagonal crystal.*

*"Hexagonal crystals have a unique directionality," says Stixrude, "which must be aligned and oriented with Earth's spin axis for every crystal in the inner core." This led Stixrude and Cohen to try a computational experiment. If all the crystals must point in the same direction, why not one big crystal? The results, published in Science, offer the simplest, most convincing explanation yet put forward for the observed seismic data and have stirred new thinking about the inner core. [https://www.psc.edu/science/Cohen\\_Stix/cohen\\_stix.html](https://www.psc.edu/science/Cohen_Stix/cohen_stix.html)*

The fundamental geometric nature of the universe is also found in the work of *Buckminster-Fuller* and *Nassim Hameed*.



*The Vector Equilibrium & Isotropic Vector Matrix*

‘The Vector Equilibrium (VE) is the most primary geometric energy array in the cosmos. Being a geometry of absolute equilibrium wherein all fluctuation (and therefore differential) ceases. It is possible to extend this equilibrium array infinitely outward from the center point of the VE, producing what is called the Isotropic Vector Matrix (IVM). The IVM consists of a simple arrangement of alternating tetrahedron and octahedron geometries.’

#### *The Akashic Records*

Barbara tells us that the **Akashic records** are stored in the crystalline center of the earth. This databank of earth history can be hooked into at grid intersections or vector points on the surface. These sites were known as the ‘*Secret Places of the Lion*’ - sites that are seen as repositories of ancient knowledge, revealing a deeper history of mankind and our interactions with multidimensional knowledge and higher intelligences.

Our **blood** is iron-based and resonates with the core of the earth. When we say that something is ‘in our blood’, we mean that it is part of our essential nature. Something that resonates deeply within us, like music or art. It also means that our blood stores our ancestral memories, connects us back to the roots of who we are.

The beta-waves of the brain also resonate with the core of the earth at 40-60Hz, so this is the source of our waking intelligence and the conscious search for knowledge which is mankind’s greatest driving force.

In Human Design, the root center is a pressure center that pushes upwards, to manifest and express ourselves openly in the world. It must hold the energy of manifestation until it is time to birth it into form. <http://www.loveyourdesign.com/the-centers-in-the-human-design-system/>

### **2<sup>nd</sup> dimension – Splenic Center**

This is the realm of crystal and mineral essences, of viral and bacterial life-forms; It is where primal life emerges out of the rocks and the oceans and the interiors of our bodies. This is the telluric realm, of earth magic, shamanism and natural healing.

*“This is the realm of the earth elementals. These guardians and keepers of the inner earth facilitate a relationship between earth and humans.” <http://ritualgoddess.com/the-9-dimensions-of-the-world-tree/>*

The earth vibration lowers as we move from the core and approach the surface, from 40Hz at the center down to 7Hz at the surface. So in order to connect with this realm, we meditate on lowering our vibrational rate, slowing the frequencies into the alpha range.

Organized religions and modern materialist/consumerist culture attempt to cut us off from the 2<sup>nd</sup> dimensional reality and the worldwide shamanic and goddess cultures that connected us to earth, sacred sites and healing. They keep us locked into the 50/60 Hz vibrational range of electrical a/c currents that keep us in the beta range of daily consciousness. The urge to ‘move off-grid’ and reconnect with the earth and with healing and shamanic cultures, tells us that these second-dimensional energies are calling us to heal ourselves and the planet from the pollution and stress that we have created.



*‘In “the symbiosis of image, monument and landscape”, Soumya James defines the “‘divine feminine’ as the female divine energy that is personified as a goddess in myth, art and as abstract objects such as elements of the natural world” and stresses the symbiotic relationship between animate and inanimate realms and between site, monument, cosmology, and devotee.’*

<http://dissertationreviews.org/archives/2432> Paul A. Lavy

*“Almost everyone has the potential, to one degree or another, to cultivate shamanic abilities if he or she wishes to do so. Researchers have found that entrainment of the brainwaves to the alpha and theta rhythms induce similar trance and visionary experiences.” Sarah Belle Dougherty (Music and Healing Arts)*

In Human Design, the Splenic center gives us our intuitive ‘cellular awareness’. The Spleen as an organ cleanses the blood, stimulates the immune system and keeps us healthy. It is the center for well-being, instinct, intuition and taste, and for knowing ‘in the now.’ This intuition is reliable, but it only speaks once - if you ignore it, it will not speak again.

### **3<sup>rd</sup> dimension – The Sacral**

Humans are the keepers of the third dimension. This is the realm of our everyday lives in linear space and time. It is the surface realm of interactions, sexuality and relationships. Human Design teaches us that the Sacral is the source of the ‘life-force’, and that humans with a defined sacral center (known as Generators) need to respond correctly to the sacral to keep ourselves ‘correctly orientated’ in space and time. As custodians of this realm, it is our responsibility to use our life-force correctly, keep the planet healthy and to ensure that we survive as a species.

#### **4th dimension – The Solar Plexus**

The lower astral plane – power battles and control – ruled by the ‘Anunaki’

The 4th dimension is the collective unconscious, or mythical realm which has been deeply manipulated by the control systems and religionists of the world to keep us locked into a mindset ruled by fear of God, war and punishment.

*“Our experience is one of pain and suffering and so we supplicate the gods to relieve our pain and suffering. But our connection to the higher dimensions were never cut, cannot be cut. Rather, we have been taught to cut ourselves off from the 9 dimensions, and worship gods that are presented to us through 4th dimensional mythology.”*

In the 4<sup>th</sup> century AD, a new myth-based religion was created to cut people off from the 2<sup>nd</sup> dimensional realms - where life emerges naturally in the telluric fields of crystals and minerals - and the earth-based traditions that understood these realms and connected us to earth, sacred sites and healing.

The early Romans had their earth temples of healing and prophesy, and worshiped fertility Goddesses. but these were systematically destroyed or taken over.

The new religion was based on the sacrificial deity worship and political-financial control of the Babylonian empire, a fear-based mind-control system that demonizes nature and the ecstatic Mother-Goddess traditions. They capped or destroyed the sacred temples of Isis and Athena and instigated blood sacrifices (Mass) in regular 7 day cycles.



The Roman Church became the center of political power that spread throughout Europe, and then the world. Their teachings of domination and control led to a globalized elite of power-brokers and financial and political institutions that came to rule the world.

#### **2011 – Awakening into the 4<sup>th</sup> dimension**

Since 2011, we have been moving upwards through the 4th dimension, through a collective awakening. In Human Design, this is seen as the awakening of the Solar Plexus as a consciousness center:

*“According to the Human Design System, humanity is in the process of transition into a new being, the RAVE. For the full mutation to happen, the emotional center, or Solar Plexus, has to fully mutate into an awareness center.”*[<https://sojmed.blogspot.com/2015/12/the-enteric-nervous-system-solar-plexus.html>]

As we move up through this field of projected belief systems, the veils of secrecy are lifted and the deceptions are exposed.

*“The 4th dimension is the collective consciousness. The globalists attempted to hijack the awakening by getting people to watch CNN news all day, following ‘world events’ that were stage-managed. But as the awakening of our CONSCIOUS participation in the 4th dimension increases, increasing numbers of people are seeing through the ‘programming’, and are moving through it into higher realms of awareness.”*Barbara Hand Clow

This 4<sup>th</sup> dimensional realm is a quantum field, and does not work according to the rules of the 3rd dimension, leading to memory problems and loss of co-ordination, therefore it is important to stay in mastery of the 3rd dimension, to stay in balance, and to stay 'orientated' so that we can function THROUGH the 4<sup>th</sup> and pass through this realm without losing our grounding.

*“We are gradually clearing the duality dark-and-light fields of the 4th dimension through new paradigm teachings and healings, so that the 4th dimension becomes diaphanous, or penetrated by the light. We, the Children of Light, are clearing the 4th dimension of the fallen thought forms of confusion, and opening up the channels into the Higher Dimensions!”*

As we rise up through the 4th dimension by overcoming our fears and illusions, we will see and experience all of these scenarios being played out in the world, all the prophecies and dramas starting with the most dense. As we see them played out, we can understand and release them, until all is released and we can experience the peace of the heart-centered 5th consciousness, the fifth world!

**5<sup>th</sup> dimension** – The Heart Center – ruled by the Pleiadians.



Image source:

<http://www.pxleyes.com/photoshop-picture/506670b52e774/Pleiadians--The-Galactic-Federation-of-Light.html>

*“The ‘Sons of Light’ project the geometries of creation into fourth-dimensional space in order to code spiritual mankind into the fifth dimension, the next larger membrane of universes.” Keys of Enoch 204:1*

According to the Teachings of Enoch, the fifth dimension is the next *"garment of light"* that our matter-energy body enters in the process of spiritual evolution. *“A less gross-material body with the restored "similitude" of God governing the physical processes.” (Keys of Enoch, Academy for Future Science)*

Since the mid-1980s, there has been an increase in the phenomenon of ‘channeling’ of 5<sup>th</sup> dimensional beings, seeking to help humanity in our transition into 5<sup>th</sup> dimensional reality:

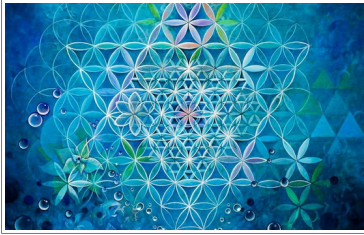
*“Greetings, we your Arcturian, Pleiadian, and higher expressions of your SELF, are in the process of joining with your fifth dimensional and beyond energy fields. This joining, which will occur only when you are ready, will flow into your third/fourth dimensional energy fields. When you/we blend that which is an octave jump beyond your present resonance, with your baseline resonance of third/fourth dimensional, you will move into an entirely different operating system.”*

<http://in5d.com/arcturians-pleiadians-merging-with-your-fifth-dimensional-self/>

The message of the 5<sup>th</sup> dimensional beings is always one of heart-centered love, joy and connectedness. As we dissolve the illusions of fear and negativity, we will emerge more and more into this heart-centered consciousness where we have access to all of the higher dimensions without limitation:

*“In your third/fourth physical reality there is limitation,  
But in the fifth dimension and beyond there is multidimensionality.”*

### **Sixth dimension – G-center – ruled by the Sirians.**



The 6<sup>th</sup> dimension is the realm of geometric forms and patterns. Patterns and geometric forms allow light and sound to manifest into concrete physical matter. The light from the 9<sup>th</sup> dimension and beyond comes through the 7<sup>th</sup> dimensional lens of sound which creates geometric forms in the 6<sup>th</sup>, and are then projected into the material world we live in. Crop circles, yantras, and mandalas are examples of how the 6<sup>th</sup> dimensional knowledge enters into the 3<sup>rd</sup> dimensional realm.

The 6<sup>th</sup> dimension holds the information for all archetypal patterns or templates, including the Adam Kadmon, or archetypal human.

The 6<sup>th</sup> dimension is ruled by the Sirians. The Dogon and Egyptians are of the Sirian lineage. Sacred geometry and labyrinths anchor the 6<sup>th</sup> dimension into the 3<sup>rd</sup> dimension.

The Dogon Tribe originates from Africa, yet many of the legends from their heritage were used by the Egyptians and subsequent dynasties. The Dogon knew of constellations that we didn't 'discover' until many years later.



According to the Dogon, Po Tolo (Sirius B) is the oldest of stars, and its name means 'deep beginning'. It is a twin of the Po – the Black hole at the center of the galaxy. The Dogon consider Po Tolo the reservoir and source of all things in this realm, and the germ of creation for our Solar System. They say it is the smallest, yet heaviest of celestial objects, and that it ejects its essence out into creation by its fast spinning. The particles of its essence are 'infinitely small'. Because Po Tolo is so massive it shapes and moulds the structure of space and time in our realm.

<http://in5d.com/the-dogon-tribe-and-their-visitors-from-the-sirius-star-system/>

Yoga, Tai Chi, and other forms of body movement based on geometries pull our 6th dimensional 'ideal form' into our 3rd dimension:

*"The great sages recognized that the patterns we see in nature are the result of the forces of creation. Yogis recognized these patterns and organized them into a complex system that aligns the physical body in time and space, with the Cosmic forces acting beyond time and space. Recognizing sacred geometry in the patterns, forms, relationships and connections of nature can connect us to the mysteries of the Universe."*

<https://jivamuktiyoga.com/focus/sacred-geometry>

Merkabah is pure 8th dimensional light coming through the 6th dimension as a living geometry of light.

In Human Design, the 6<sup>th</sup> center is the G-center. This is unusual in that it doesn't correspond with any of the traditional 'chakras'. However, the 8 gates of the G-center form an 8-sided geometry when projected onto a map of the heavens. As the sun moves through the zodiac, it opens these gates at the equinoxes, the solstices and the 4 traditional festivals of the Celtic world.

### **7<sup>th</sup> dimension – Throat – Sound – Manifestation - Ruled by the Andromedans**

*"In the beginning was the Word, and the Word was with God" John 1:1*

The power of creation is with God. 'There is no God but God'. That we as humans might have access to this dimension, where God calls the universes into existence, is difficult to comprehend, yet the promise of life in the higher dimensions is given in all the sacred texts of the world.



The use of Sacred syllables, Prayers, Mantras and the Divine names of God have been taught in the sacred traditions of east and west, with the purpose of uniting us with our Divine nature - our oneness with the Creator.

*"This transfer of language is acquired when the mind can operate on the seventh energy level where the Host of Light, the Adonai 'Tsebayoth, comes to commune with Man on the Sabbath day. [Keys 207:2]*

The 7<sup>th</sup> dimension is sound. It is the creative power of the universe. When we became fully human (about 50000 yrs ago), our throats opened and we were able to call the world into being. But the Annunaki do not have this power so they manipulated us to create the world as they want it.

Working through the Babylonians and Romans, they instigated a **7-day cycle** of blood sacrifice in the public Roman Catholic mass, as well as demonic masses that are carried out in secret. Through continual wars and desecrations, they attempt to replace the vibrations of creation with the screams of sacrificial victims.

The 7 symbolism is used extensively in media propaganda to promote this agenda. It is not for nothing that Trump banned visitors from 7 nations. We are programmed to believe that when the 7 is completed, the world will end, that these wars and disasters are part of some 'divine plan of 7', rather than a series of carefully orchestrated events. This programming of fear consciousness is just the latest manifestation of fear-based religious propaganda.

We are also seeing it in the demonising of the name of the Goddess ISIS as a terror group that is being allowed to destroy temples as a final attempt to purge Goddess worship and nature religion from the ancient Near East.

*“The destruction is part of a propaganda campaign that includes videos of [militants rampaging through Iraq's Mosul Museum](#) with pickaxes and sledgehammers, and the dynamiting of centuries-old Christian and Muslim shrines.”*

Until we learn to use the languages of light which originate with God we will not be able to harmonize the lower 6 dimension levels into the Divine consciousness, and will remain corrupt, and in confusion. This was the message of the Tower of Babel, when imperfect humanity attempted to reach heaven without fully understanding the power of creation and our language was thrown into confusion, until the ‘restitution’ that is God’s promise to awakened humanity.

*“For the trumpet shall sound, and the dead shall be raised incorruptible, and we shall be changed.” I Corinthians*

### **8th dimension - Ajna – Light – Ruled by Orion and the ‘Galactic Federation’**

*“I was then taken by Enoch to the region known as Saiph in the great star field of Orionis; from there I was taken into the presence of the field of Light known as Mintaka.” [Introduction to Keys of Enoch]*

*“The teachings of Light are sent down from the higher worlds to the lower planetary creations in the higher Language of Light which communicates through pulsating geometries of Light or ideographic cybernetics. These teachings of wisdom are given to allow Man to have communion with other planets of intelligence.” [Key 207:4-6]*

*‘Entering the mind of the sun to access the 8<sup>th</sup> dimension’ Barbara Hand Clow*

Solar cultures recognize the divine level of the sun. We need to go to the source to access the information we need when we really need it, to bypass the Annunaki controlled 5th dimension. This is why the Sun culture of Egypt opposed the priesthood that kept people in control and went straight to the sun-disc which is the mind-face of the sun.

### **9<sup>th</sup> dimension - Crown – Center of the Galaxy – Tzolkin – cosmic time activations**

The agendas for our reality, our local universe, are coming through time codes from the dimensions above the 9<sup>th</sup> that we cannot access directly. The ‘Galactic synchronization beam’ that came in in 1987 at the harmonic convergence was witnessed and grounded by 100,000 people who were at Tiahuanacan, and thousands more around the world.

The harmonic convergence was inspired by José Argüelles. A visionary experience at the age of fourteen atop the Pyramid of the Sun, Teotihuacán, Mexico, in 1953, led him to a lifelong investigation of the mathematics



and prophecies associated with the Mayan Calendar. His decoding of its mathematics resulted in the discovery of the Law of Time.

According to the Law of Time, modern humanity is in crisis because it is immersed in an erroneous and artificial perception of time, causing civilization to deviate at an accelerated rate from the natural order of the universe. To remedy this self-destructive situation, a collective unification into galactic consciousness is required. For this reason, José Argüelles promoted the return to a natural timing cycle through the regular measure of the 13-Moon 28-day calendar.

<http://lawoftime.org/thirteenmoon.html>